



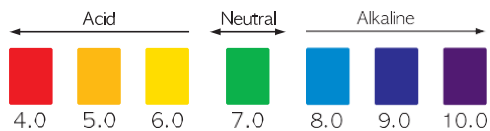
Tyent Australia

www.tyentaustralia.com.au

The user should be responsible for failure or improper selection or improper use of the products such as use in any manner for which the product was not originally intended.

This product is subject to change that enhance its performance without prior notification.

pH Chart



How to Measure: Place 10-15 ml of test water in a container and add 2-3 drops of reagent. Then, mix well and check color of the water with the pH chart above.

(Color is dependent on water quality and reagent)

If the supply cord is damaged, it must be replaced by the manufacturer, its service agent or similarly qualified persons in order to avoid a hazard."

This appliance is not intended for use by persons (including children) with reduced physical sensory or mental capabilities, or lack of experience and knowledge, unless they have been given supervision or instruction concerning use of the appliance by a person responsible for their safety.

Children should be supervised to ensure that they do not play with the appliance.

4/19-21 Bourke Rd, Alexandria NSW 2015.

TEL : 1300 665 636

Website : www.tyentaustralia.com.au

MADE IN KOREA



WATER IONIZER



User's Manual

- This product is intended for domestic use only.
- Keep manual handy for easy reference.
- Carefully read User Manual, particularly "Safety Warnings"



To Our Valued Customers

Thank you for purchasing the **YT20-TL series** Water Ionizer.
 Please read all safety warnings and this User's Manual carefully before using this product to ensure proper product usage. (Keep the manual handy for easy reference.)

- We are not responsible for any accidents and/or malfunctions due to the improper use of this machine.
- Please keep the manual and warranty card in a safe place, so that it's easily accessible when you need it.
- Please refer to this manual often when you have questions during the use or when troubleshooting this unit.

Intended Use

This device creates **functional alkaline, ionized water**. It changes the properties of regular tap water through the use of electrolysis. Following are the changes normal tap water undergoes via this process:

- An increase or decrease in pH level
- Creation of negatively charged hydrogen ions (anti-oxidants)
- Smaller water molecule clusters for better absorption
- Purification through filtration

Table of Contents

To Our Valued Customers	2
Table of Contents	3
Before Usage	4
Safety Precautions and Warnings	5
Product Features	10
Package Contents	14
Unit Overview	15
How to Install the Unit	16
Water Hose Installation	18
Customer Serviceable Parts	20
How to Change the Filters	21
How to Reset the Filters	22
Operation Touch Screen	23
When using the Touch Screen	27
pH Level Adjustment	30
System Setup Method	31
Selecting Voice On / Off	36
Cleaning Function	37
Eco Mode	38
Turbo Function	39
Usage Recommendations	40
Temperature Sensor	42
Unit Specifications	43
Troubleshooting	44
Product Warranty	47



Before Usage

Safety precautions are provided for the safe and proper use of this unit and can prevent danger, bodily harm and/or possible damage due to misuse. Please make sure you are familiar with all the safety precautions and warnings associated with this unit.

	DANGER (Red Warning Sign) indicates an imminent hazard that could result in serious injury or death. If you see this, stop the use of this unit immediately.
	WARNING (Orange Warning Sign) indicates a potential hazard that could result in significant bodily harm or damage to the unit. If you see this, stop the use of this unit.
	ATTENTION (Yellow Warning Sign) indicates a potential hazard that could result in minor bodily harm or damage to the unit.

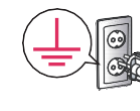
1. Do not drink functional water with medication. Use filtered water instead.
2. Always consult your primary care physician before drinking functional water. If you are a first-time drinker, only drink a small amount for the first week near a neutral pH level. This will give the body time to adjust to functional water during the detoxification period.
3. If you notice any negative effects from drinking functional water, stop drinking immediately and consult with your primary care physician about changes in your body's pH level.
4. If you are currently under the care of a primary care physician for an existing condition, consult with your primary care physician about how changes in pH and other characteristics of functional water could affect your condition.
5. If you suffer from gastric acidity, kidney failure or potassium excretion, you should not drink functional water.
6. Verify the pH levels of the functional water dispensed from this unit on a monthly basis to ensure proper function. This can be done with the supplied reagent drops and a pH color chart.
7. When switching from one pH to another, it is good practice to let the water run for several seconds before using.
8. It is common to drink half your body weight in ounces. For example, if you weigh 180 pounds, it may be wise to drink 90 ounces of water per day. This especially applies after you have given your body some time to adjust to the new pH level.
9. 9.5 pH(± 0.3) is the recommended drinking level for functional water. It is not recommended to drink functional water above 10 pH.
10. If you wish to store functional water, use a glass, or other non-leaching material with an airtight lid and store in the refrigerator. Functional water will begin to weaken immediately and loses most benefit after 3 days.
11. Never run hot water through this unit.
12. Never drink acidic water.

Safety Precautions and Warnings

Regarding Power Supply



Please always use a grounded power outlet.



Do not use if the power cord is damaged or in a loose power outlet.



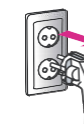
Do not pull the power cord. Never touch power cord or power outlet with wet hands.



Do not forcibly bend, squeeze, damage or crush the power cord under heavy objects.



Unplug the power cord during general maintenance, repair, inspection and while replacing parts.



Do not use power surge protectors with this unit. Use unit with its own dedicated power source.





Only use the unit with the correct voltage.



To reduce the risk of electric shock, do not remove cover; no user-serviceable parts inside. Refer servicing to qualified service personnel. Removing the cover will void the warranty.



Installation



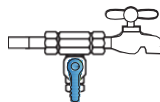
Do not place this unit near heat sources.



Do not place this unit on an uneven surface. Do not drop or use excessive force on this unit.



Do not connect water line to a hot water supply.



Do not use unfit raw water in accordance to the standards of the water service act.



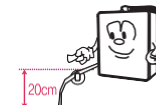
Do not use in areas of high humidity and/or high temperature.



Place this product near a sink and always allow water to drain into the sink.



Place acidic water outlet hose within the height of the unit. Make sure the end of the hose is placed less than 8 inches (20 cm) from the bottom of the unit.



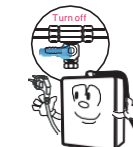
If the unit is not used for a few days, let the water run for 1-2 minutes before drinking functional water.



Usage



In the case where the unit isn't used over a long period of time, shut off the valve and unplug the power cord.



In case of strange noises, burning odor or smoke, unplug the power cord immediately and refer servicing to qualified service personnel.



Replace filters every 6 months to optimize the purification performance of this unit even if the replacement indicator light isn't turned on.





Do not place any objects on top of this unit regardless of how small.



In case water leaks out of the unit (other than hoses) or unit is standing in a puddle of water, shut off the water supply, unplug the power cord and refer servicing to qualified service personnel.



Do not poke or scratch the touch pad or LCD display with sharp objects.



In areas of hard water (Calcium scaling present on faucets) notify service provider and install cell safe anti scale Pre-filter, protects against scaling of ionizer.



Do not use alkaline or acidic water in fish bowls or aquariums. The sudden change in pH could be harmful or fatal to some marine life.



It is beneficial for the maintenance of the machine to run a strong acidic level for a period of 5 minute cycles twice weekly. This will help to maintain a clean chamber.



It is normal for condensation to be present on the unit during humid summer months. If condensation persists despite weather conditions, unplug the power cord and refer servicing to qualified service personnel.



Cleaning

Do not store unit near chemicals, food, metals or medication.



benzene or thinner..... Danger

Do not spray water on the main unit. Do not clean with a damp cloth, benzene or other chemicals, which may leak into the unit.

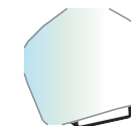


Storage

Remove the filters and turn them upside down to remove excess water before storing.



In case the original packaging is not available, cover the unit in plastic to avoid scratching the surface.



Store unit in its original packaging in a cool, dry place when not in use.



Carefully remove this unit from packaging. Keep original packaging for future storage and unit transportation.





Product Features

FULL TOUCH LCD – TRANSFORMATION AT YOUR FINGERTIP



The Industry's First Full Touch Screen Panel

The Full Touch Screen Panel System automatically activates the unit's operations through a simple touch to the desired icon displayed on the screen.



Touch LCD Screen with a Clear Picture Tone

A 262,000 Color Touch LCD Display provides diverse information in true vivid colors for user convenience.



GUI [Graphical User Interface]

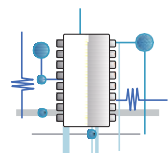
A Graphical User Interface is designed specifically for ease of use and operation. Communication between the user and ionizer has never been this simple!

MORE POWERFUL SYSTEM ENGINE !



Upgraded Power Turbo System

Turbo upgrades to the SMPS Power Supply system produce both the acid turbo water and strong alkaline water you need!



Power SMPS Power Supply System

Power SMPS Power Supply System provides the maximum instantaneous output needed to produce the highly stable electric power required for each phase of electrolysis.



Electrodes with Round-Mesh Plate Technology

These Platinum-Coated Titanium Plates are made with highly stable, durable mesh technology that enhances the instantaneous electrolysis efficiency.

CAREFUL CONSIDERATION FOR THE USER



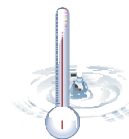
Excellent Sound Quality with Guided Support

Functions under operation can be further identified by the top quality voice guided system.



Multiple Languages Supported

Diversified language guide support is available by selecting 1 of 4 languages featured from across the world.



Temperature Sensor Function for Safe Operation

If the temperature of the source water exceeds 95°F(35°C) then water will stop flowing and a warning message will appear on the screen.



Automatic Water Discharge Interruption Function

In order to prevent the overflow of water due to user negligence, the water discharge is automatically stopped after 15 minutes of use.
*Turbo : 5minutes



Product Features



Automatic Electrolysis Tank Cleaning Function

The interior of the Electrolysis Tank is automatically cleaned on a regular basis, ensuring stable electrolysis operating conditions.



Automatic Memory Function

The last function used by the user is automatically memorized and displayed on the Standby Screen for fast and convenient operation.



Water Discharge Nozzle with Directional Control

The water discharge direction may be adjusted to many diverse angles based on user preference.

CARE FOR THE ENVIRONMENT



Earth-Friendly Technology when in ECO Mode

When setting the eco-mode, the LCD backlight will be turned off automatically during periods of non-use and the Time function is displayed.

FRESH, PURIFIED WATER IS A MUST ALONG WITH HEALTHY MINERALS!



Water Purification through a Clean Process

Perfect, seamless elimination of foreign substances including residual chlorine, organic & inorganic compounds through the filtering process using functional UF and π Ceramic materials, enhancing the alkali water producing condition.

SELF MAINTENANCE MADE EASY – FROM INSTALLATION TO AFTER-SERVICE



Filter Usage Indication and Replacement Time Guide

Level of filter usage can be identified through the LCD Screen on a real time basis. The recommended replacement time is automatically displayed on the screen with a voice guide.



Super Simple Filter Replacement System

A simple filter replacement system along with one-touch Filter Usage Initialization Setting System makes filter management easy for any one.



Convenience of Operating Condition Setting System

Easy Setting System familiar to common users is employed, allowing the convenience of setting or canceling the desired through the LCD Screen.



pH Control Function

Respective alkali, acid & turbo phases can be easily controlled by the user.

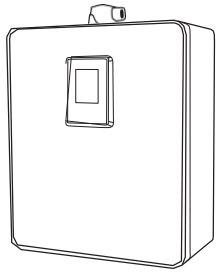


Self Diagnosis Function

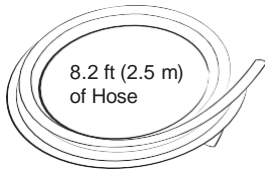
When the condition of the source water is not suitable, the water discharge is automatically suspended, displaying a Warning Sign on screen.



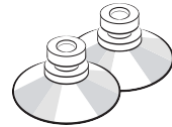
Package Contents



1 Water Ionizer



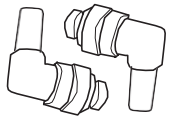
8.2 ft (2.5 m)
of Hose



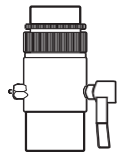
2 Tube Suction Cups



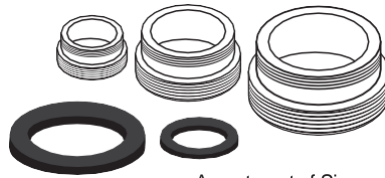
1 Water Outlet Tube



2 Stem Elbows



1 Faucet Diverter



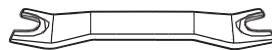
Assortment of Sizes
and Rubber Washers



1 User's Manual



1 pH Testing
Solution Bottle

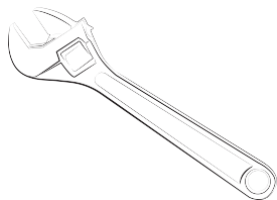


Wrench

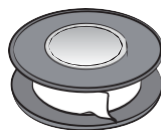
Tool you will Need



Utility Scissors



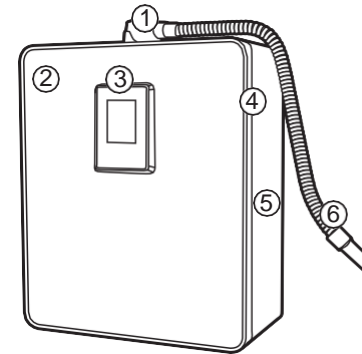
Adjustable Wrench



Plumber's Tape

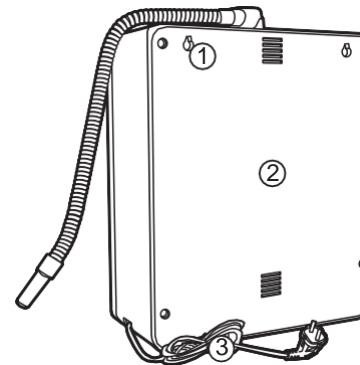
Unit Overview

Make sure you are familiar with the parts and features of this unit, and carefully read the user's manual and other important information



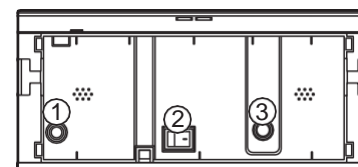
Front View

1. Water Outlet Unit
2. Front Cover
3. LCD Display
4. Front Case
5. Middle Case
6. Water Outlet Tube



Rear View

1. Hanging Groove
2. Rear Case
3. Power Cord



Bottom View

1. Water Inflow
2. Power Switch
3. Water Outflow



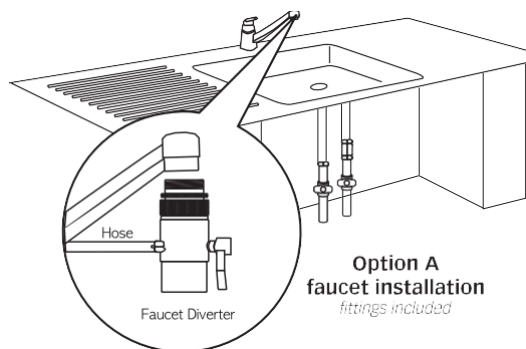
How to Install the Unit

Determine if you will connect unit directly to cold water supply line (under-sink) or to faucet (see image)

- **Option A | Faucet:** Faucet connection requires faucet diverter (included) or
- **Option B | Under-Sink:** under-sink connection requires under-sink adapter kit (not included) or compatible t-valve (available from most hardware stores)

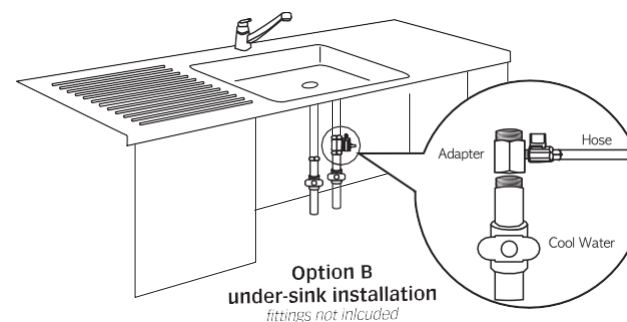
Option A – Faucet Installation

Many faucets vary in design, and your faucet may require different setup instructions than those featured in this manual. Please consult a qualified service professional if you are unable to correctly complete the installation. For more help with installation, please visit www.evontis.com.



1. Shut off both hot and cold water main supply at pipe under-the sink.
2. If your faucet features a screw-on style aerator, remove it by unscrewing it from the tip of the faucet.
3. If the included faucet diverter does not fit directly to the tip of the faucet, select an appropriate size connector and rubber washer (included).
4. When connecting diverter or adapter to faucet, be sure to use plumbing pipe thread seal tape (not included) to prevent leaks.
5. Connect faucet diverter or faucet diverter (with appropriate connector) to faucet.
6. Be sure all connections are secure but do not over tighten.

Option B – Under-Sink Installation



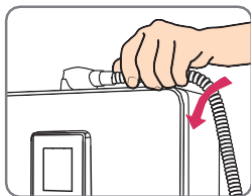
1. Purchase either an under-sink installation kit (not included) or purchase T-connection (with shut-off valve) from a hardware or plumbing supply store.
2. Shut off both hot and cold water main supply at pipe under-the sink.
3. Locate the cold water supply line valve.
4. Disconnect faucet cold water supply line from main cold water pipe – use towel to catch small amount of water that may come from faucet supply line.
5. When connecting T-connection to cold water pipe, be sure to use plumbing pipe thread seal tape (not included) to prevent leaks.
6. Reconnect faucet cold water supply line to T-connection (now secured to main cold water pipe)
7. Be sure all connections are secure but do not over tighten.

Both Options

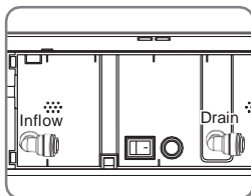
Do not turn on main water supply until all hoses are properly installed to the unit. Unit and components are subject to change without prior notification in order to enhance performance.



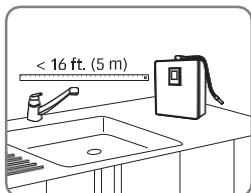
Water Hose Installation



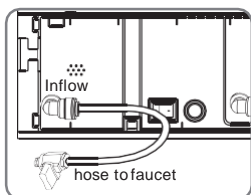
1. Place the unit on the planned installation location and screw the flexible tube clockwise into the water outlet hole positioned at the top of the unit. Do not over tighten.



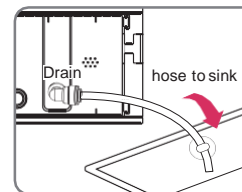
2. Press the stem elbows into the water inflow and outflow holes located on the bottom of the unit until you hear a click and feel the hose sit firmly in place.



3. Measure between where the unit will be located (on the counter) and the water faucet (or under-sink T-connection) where the diverter (or T-connection) will be installed. Cut enough hose to allow connection from the rear of the unit to the water supply (either faucet diverter or under-sink T-connection). Note: Keep the length under-16 feet (5 meters) from the unit to the faucet. You may need a pressure pump or larger size hose if the pressure is too low. Be sure to leave a few extra inches (centimeters) of length so the faucet can still be rotated.



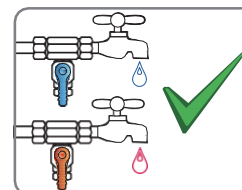
4. Connect the hose from the inflow hole to the cold water supply, either at the faucet diverter (Option A - remove the nut from the diverter, slide the nut on to the hose, firmly seat the hose on the faucet diverter, and screw the nut over the hose and back on to the faucet diverter) or the under-sink T-connection. (Option B - route the hose through the counter-top to the T-connection, firmly seat the hose on the T-connection, make sure the connection is sealed completely)



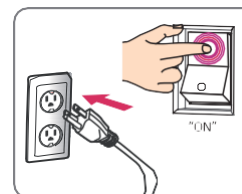
5. Cut an appropriate length of drain hose and connect it to the drain on the rear of the unit. Make sure the drain hose is positioned lower than the unit and in the sink to drain properly.



6. Make sure all hose connections are firmly seated in the correct holes, both on the unit and at the water supply



7. Turn on both the cold and hot water supply. Make sure there are no leaks at any of the connections. Make sure the faucet is working with both hot and cold water. Make sure there are no leaks from the hose connections on the bottom of the unit. Make sure the hoses are firmly seated in the unit holes.



8. Plug in the power cord and turn on the unit. You should hear a series of tones when you power up the unit.



※ INTRO Screen appears in about 10 seconds only when initial power is supplied.



Customer Serviceable Parts

ATTENTION: The consumer accepts any and all responsibility and/or liability if replacement filters and/or parts are not manufacturer specific. This unit contains high-performance purifying filters and an advanced control system.



Primary Filter: YT20 1st Filter

Recommended filter replacement cycle:
951.0 gallons (3,600 L) / Every 6 months

Removes harmful chemicals like chlorine and compounds like agrichemicals, detergents, large suspended matter like rust, sediments, and other volatile organic compounds efficiently via activated absorption method. It also eliminates bad smells and the remaining chlorine dissolved in the water.



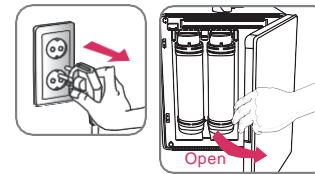
Secondary Filter: YT20 2nd Filter

Recommended filter replacement cycle:
951.0 gallons (3,600 L) / Every 6 months

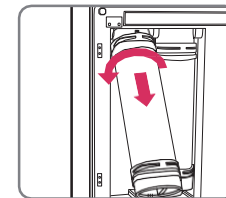
0.01 micrometer artificial film filters contaminated materials including ordinary bacteria, etc and maintains minerals in water.

The life of the filter can vary greatly due to use, water pressure, water quality and the changing of the seasons. Filters may need to be replaced sooner than the scheduled time due to these reasons, you may notice reduced water quality or declining water taste.

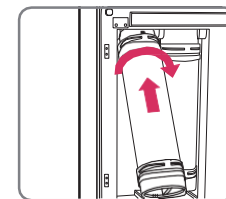
How to Change the Filters



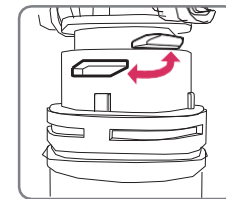
1. Shut off the water supply to the unit and turn the power off and unplug the power cord. Open the door in front of the product.



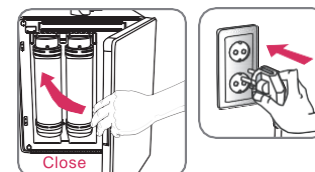
2. Raise the filter to be replaced and turn it counter clockwise to remove it.



3. Put new filter into the right position by turning it clockwise.



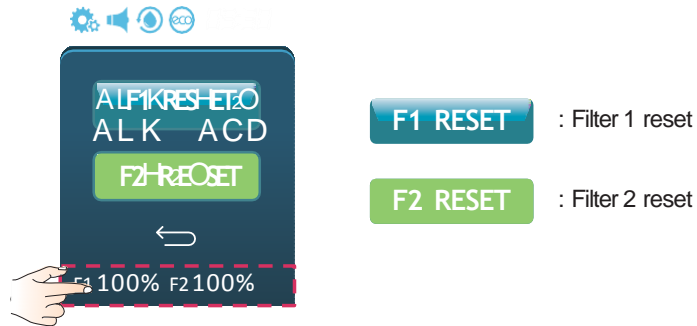
4. When installing the filter, the connection bump of the head and the connection groove on the top of the filter should be completely combined.



5. Close the door, plug the power cord back in, reengage the water supply and switch the unit back on.



How to Reset the Filters



1. First Filter Reset

- ① Press the bottom part of LCD Screen.
MENU Window appears upper the bottom part of LCD Screen.
- ② To initialize, press the "F1 RESET" icon 2 times.
※LCD : percentage (%) of initialization of filter

2. Second Filter Reset

- ① Press the bottom part of LCD Screen.
MENU Window appears upper the bottom part of LCD Screen.
- ② To initialize, press the "F2 RESET" icon 2 times.
※LCD : percentage (%) of initialization of filter

Press the "←" RETURN button when returning on the Home screen.

CAUTION! Use the Filter Initialization Icon only after Filter is changed.

Operation Touch Screen

1 Standby mode



Home screen

	Set up		Alkaline water
	Voice on		Acidic water
	Voice off		Purified water
	Cleaning		Turbo water
	Eco mode on		Filter 1 usage
	Eco mode off		Filter 2 usage

- ① Display line of the set status
- ② Functional water operation
- ③ Display line of filter usage (default : 00%)

Alkaline screen



	Alkaline level 1
	Alkaline level 2
	Alkaline level 3
	Alkaline level 4

Acidic screen



	Acidic level 1
	Acidic level 2
	Acidic level 3
	Home button



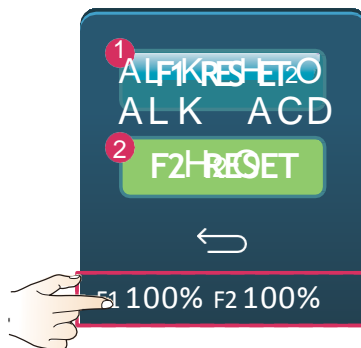
2 Menu window

Push the upper part of LCD screen.
MENU Window appears on the LCD Screen.



- 1 Set up mode (page 31)
- 2 Voice on/off (page 36)
- 3 Cleaning (page 37)
- 4 Eco mode on/off (page 38)

Push the bottom part of LCD screen.
MENU Window appears on the LCD Screen.



- 1 Filter 1 reset
- 2 Filter 2 reset

CAUTION! Use the Filter Initialization Icon only after the filters have been changed.

3 LCD Display



- Selected mode
- Auto flow stop time indicator
- Working indicator

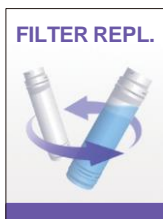
DISPLAYS CHANGE

LCD display will match the pH level color according to water pH level being used after icon is pressed.





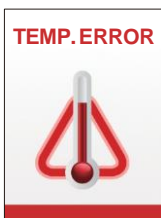
4 Message Display



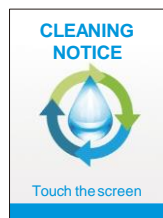
When this is displayed, it is time to replace the filters (p. 21~22)



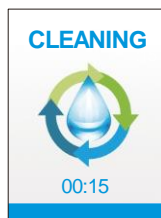
When this is been a suspension of water supplied to the unit, issuing this message prior to stopping water outflow.



When this is displayed, water inside the unit is higher than 95°F(35°C). The water supply will then be shut off and the unit will stop operating. (p. 42)



When the automatic cleaning time comes, the unit is being cleaned. CLEANING NOTICE is which can be done automatically and/or manually.

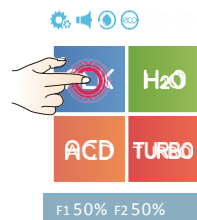


CAUTIONS in using the TOUCH Screen

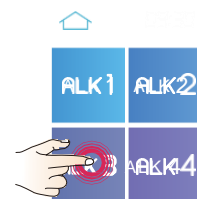
1. Screen may not be seen well under direct sunlight.
2. Do not push the Screen hard with sharp or pointy objects.

When using the TOUCH Screen

1 Alkaline water outflow



1 Press the “ALK” icon on the Home screen.



2 Press the desired water level icon on the alkaline screen.



3 Water outflow starts. Screen displays current level and stop time. Press the screen to stop the flow of water.



4 When done, screen moves to Alkaline screen.

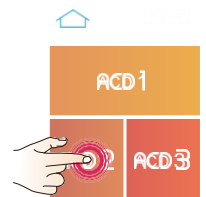
Return to the Home screen when pressing the “Home” button.



2 Acidic water outflow



1 Press the "ACD" icon on the Home screen.



2 Press the desired water level icon on the acidic screen.



3 Water outflow starts. Screen displays current level and stop time. Press the screen to stop the flow of water.



4 When done, screen moves to acidic screen.



Return to the Home screen when pressing the "Home" button.

3 Purified water outflow



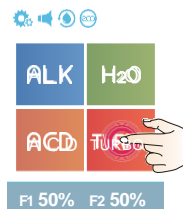
1 Press the "H₂O" icon on the Home screen.



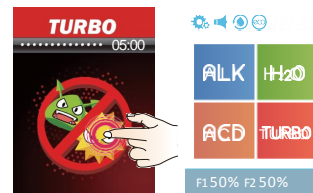
2 Water outflow starts. Screen displays current level and stop time. Press the screen to stop the flow of water.

3 When done, screen moves to Home screen.

4 Turbo function outflow



1 Press the "Turbo" icon on the Home screen.



2 Water outflow starts. Screen displays current level and stop time. Press the screen to stop the flow of water.

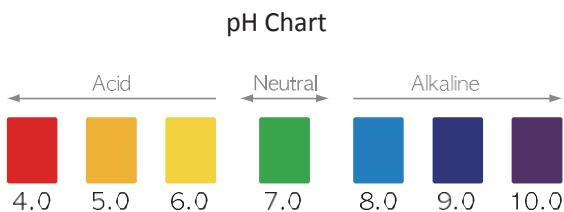
3 When done, screen moves to Home screen.



Return to the Home screen when pressing the "Home" button.



PH Level Adjustment



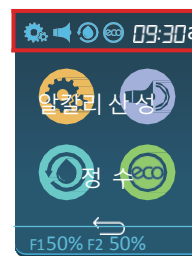
Just remember when testing the pH be sure to allow unit to run for 2 minutes before taking a sample of the water. If you have to adjust percentage, after adjusting, run an additional 2 minutes before taking sample. When testing pH values we like to use 2 Tablespoons of the water being produced and 4 Drops of the Re-Agent in a clear glass. The minimum and maximum Turbo waters produce will be dependent on the water source quality. Set Turbo at 99% for maximum pH levels, these levels can range normally as follows:

Color of pH Testing of Each Level :	
Alkaline Turbo (Dark Purple)	
Acid Turbo (Dark Red)	
Alkaline Level 1 = Approx 8.0 pH (light blue)	
Alkaline Level 2 = Approx 8.5 pH (blue)	
Alkaline Level 3 = Approx 9.0 pH (Dark blue)	
Alkaline Level 4 = Approx 9.5 pH (Purple) H ₂ O	
= Approx 7.0 pH (green) Purified Water	
Acid Level 1 = Approx 6.5 pH (light yellow) Acid	
Level 2 = Approx 5.5 pH (light orange) Acid	
Level 3 = Approx 4.5 pH (Red)	

※pH value indicated for each level is based on standardized test result which have used average tap water.

System Setup Method

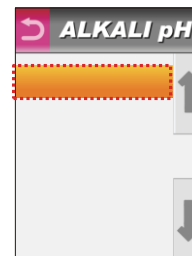
1 ALKALI pH Level Adjustment



- Press the top left corner of screen. MENU options will fall below upper part of screen.
- Press the setup icon.

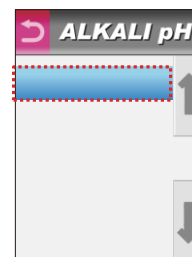


- Press "ALKALI pH"



- Press desired level.

Backcolor	
	Orange highlight shows current position on menu.
	A blue highlight means that changes to that setting are possible.

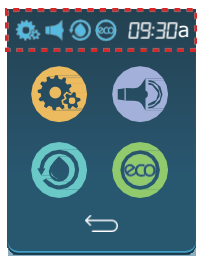


- : ALK pH level up (09%, 10%, 11%...)
- : ALK pH level down (07%, 06%, 05%...)

If UP/DOWN Icon is pushed, digital number moves by one step.	
	Push RETURN icon for previous menu screen. Voice says : "Applied"
	Push RETURN icon again to complete set up. Voice says : "Set up was completed"



2 ACIDIC pH Level Adjustment

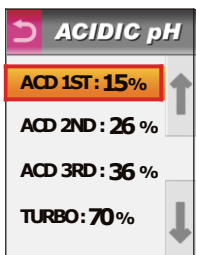


1 Press the top left corner of screen. MENU options will fall below upper part of screen.

2 Press the setup icon.

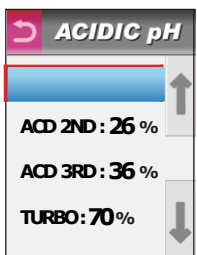


Press "ACIDIC pH"



Press desired level.

Backcolor
 Orange highlight shows current position on menu.
 A blue highlight means that changes to that setting are possible.

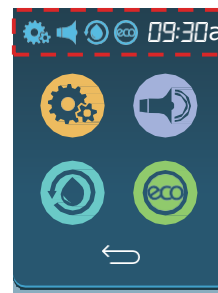


: ACD pH level up (08%, 09%, 10%...)

: ACD pH level down (06%, 05%, 04%...)

If UP/DOWN Icon is pushed, digital number moves by one step.
 Push RETURN icon for previous menu screen. Voice says :“Applied”
 Push RETURN icon again to complete set up. Voice says :“Set up was completed”

3 LANGUAGE Mode



Press the top left corner of screen. MENU options will fall below upper part of screen.

Press the setup icon.



Press "LANGUAGE"



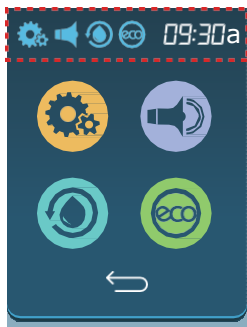
Press desired language.

Supported language
 KOREAN, ENGLISH, CHINESE, SPANISH

If UP/DOWN Icon is pushed, digital number moves by one step.
 Push RETURN icon for previous menu screen. Voice says :“Applied”
 Push RETURN icon again to complete set up. Voice says :“Set up was completed”



4 VOLUME Level Adjustment



- 1 Press the top left corner of screen. MENU options will fall below upper part of screen.
- 2 Press the setup icon.



- 3 Press "VOLUME"

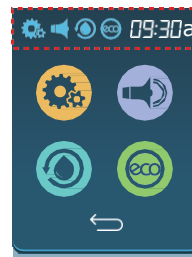


- 4 : Volume up (0-10step)
- : Volume down (0-10step)
- Pressing this icon will let you hear current volume.

If UP/DOWN Icon is pushed, digital number moves by one step.

Push RETURN icon for previous menu screen. Voice says : "Applied"
 Push RETURN icon again to complete set up.
 Voice says : "Set up was completed"

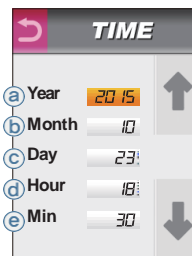
5 Setting the TIME



- 1 Press the top left corner of screen. MENU options will fall below upper part of screen.
- 2 Press the setup icon.

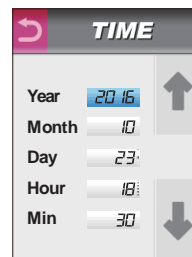


- 3 Press "TIME"



- 4 Adjustment time and date with the arrows :
 - a Year b Month
 - c Day d Hour
 - e Minute

Backcolor
 Orange highlight shows current position on menu.
 A blue highlight means that changes to that setting are possible.



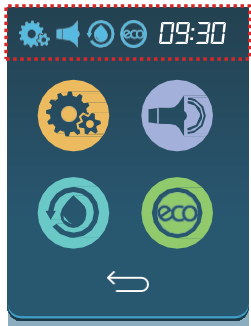
- 5 : for up : for down

Time set up is complete.

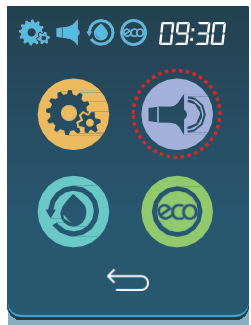
If UP/DOWN Icon is pushed, digital number moves by one step.
 Push RETURN icon for previous menu screen. Voice says : "Applied"
 Push RETURN icon again to complete set up.
 Voice says : "Set up was completed"



Selecting Voice On/Off

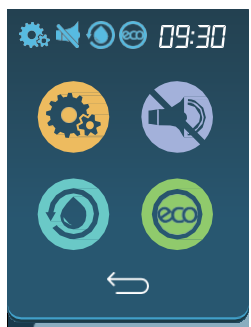


- Press the top left corner of screen. MENU options will fall below upper part of screen.



- Select the VOICE icon.

※ Even if volume is turned off, warning notifications will still play through speaker if necessary. (filter replacement, water not supplied, TEMP, Cleaning, Setup mode)



- The voice will be turned on/off by selecting the voice icon in this sequence.

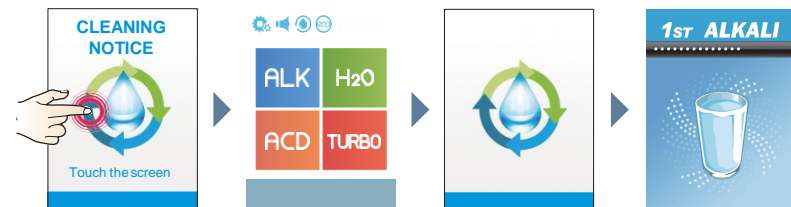


Cleaning Function

Cleaning can take place automatically and/or manually.

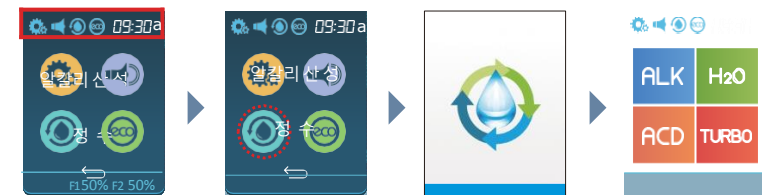
- Auto Cleaning (15 seconds) is performed during water outflow after more than 24 hours of non-operating or after 30 liters of water outflow.
- Manual Cleaning (15 seconds) is performed whenever desired simply by touching the icon.

Auto Cleaning



- If the screen is touched, it changes to the previous used screen.
- When functional water is selected on Standby mode, it goes into automatic cleaning for 15 seconds, and the selected functional water will be dispensed.

Manual Cleaning

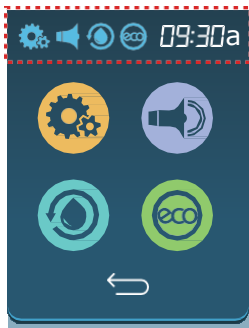


- Press the top left corner of screen. MENU options will fall below upper part of screen.
- Press the Cleaning icon.
- Cleaning mode stops after 15 minutes and the screen changes to the Home screen.



ECO Mode

ECO Mode is a feature to indicate time on the display during periods of non-use.



- 1 Press the top left corner of screen. MENU options will fall below upper part of screen.



- 2 Select the ECO icon. 

- 3 ECO Mode will be turned on/off by selecting the ECO icon in this sequence.



When ECO MODE is set, unit consumes less power during periods of non-use. The Screen will display time if ECO Mode is set after 10 minutes after using the unit. If the screen is touched, it changes to standby Mode by displaying last screen used.



TURBO Function

The TURBO Function allows you to create strong alkaline and acidic water. These types of water are ONLY to be used for cleaning, sanitizing and disinfecting purposes.



pH 2.5
~ pH 3.8



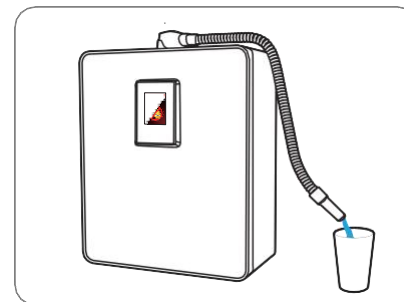
Used to Disinfect and Sterilize



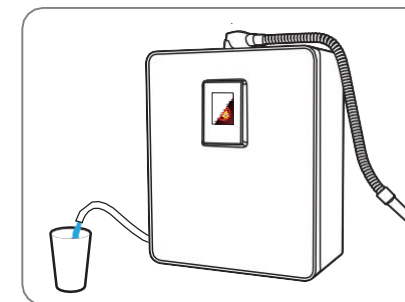
pH 10.0
~ pH 11.8



To remove stains from fabrics/carpet/upholstery.



Alkaline Turbo Water Outflow



Acidic Turbo Water Outflow

Caution



The waters produced in TURBO mode are not intended for drinking. **DO NOT DRINK** these types of waters. **DO NOT Use the TURBO function in a manner other than directed.**



Usage Recommendations



1st Alkaline Water
(Drinking Level 1)

Suitable for initial stage of drinking.



2nd Alkaline Water
(Drinking Level 2)

For making couee, tea and for watering plants.



Clean Water

Creates purified water. For taking medications and making baby formula.



TURBO Function

DO NOT DRINK. Strong acid/alkaline water that must be used when cleaning, disinfecting, washing and sterilizing.



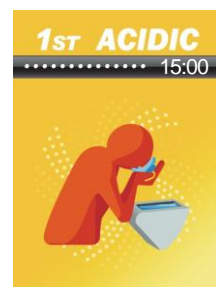
3rd Alkaline Water
(Drinking Level 3)

For making rice.



4th Alkaline Water
(Drinking Level 4)

For washing vegetables and dishes.



1st Acidic Water
(DONOTDRINK)

For washing hands, face.



2nd Acidic Water
(DONOTDRINK)

For washing vegetables and fruits.

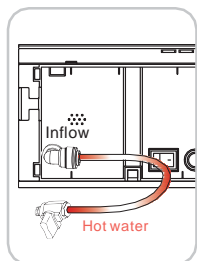


3rd Acidic Water
(DONOTDRINK)

For washing dishes.



Temperature Sensor

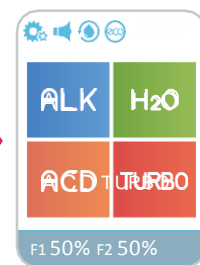
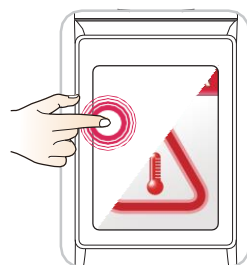


1 Should water with a temperature higher than 95 °F (35°C) get into the unit, the water supply will automatically be shut off and the unit will stop operating.



2 LCD: "TEMP ERROR"

3 Bring source water temperature within proper range.



4 If you press the error icon, the display will switch to the previous used screen.



5 When source water is within proper range, the ionizer will resume proper function and water will flow.

Unit Specifications

Model Number	YT20-TL13	YT20-TL11	YT20-TL9	YT20-TL7
Electrolytic Cell Quantity of Poles	13	11	9	7
Power Consumption	Max 220W	Max 220W	Max 220W	Max 220W
TURBO Function	○	○	○	○
Product Name	TYENT Water Ionizer			
Purifying Mode	DM Filtration Mode			
Rated Voltage	100 -130 V~/ 200 - 240 V~, 50/60 Hz			
Available temperature	39°-95° F (4°-35° C)			
Operating Pressure Range	0.1- 0.5 MPa			
pH Levels	4 Alkaline, 1 Neutral, 3 Acidic			
Adjustable pH	User adjustable pH levels control			
Filters Configuration	2 Filters System			
Filter Life Display	LCD filter replacement and announcement			
Water Cell Plate Materials	Platinum and Titanium			
Product Size	11.8 (W) x 5.3 (D) x 13.9 (H) inches			
Product Weight	10.8 Lbs			

※To make the best functionality, there may be some change without notices.

Tyent Water is the First People choice all around the World







Thank you

Tyent Australasia PTY LTD

4/19-21 Bourke Rd, Alexandria NSW 2015.

TEL : 1300 665 636

Website : www.tyentaustralia.com.au